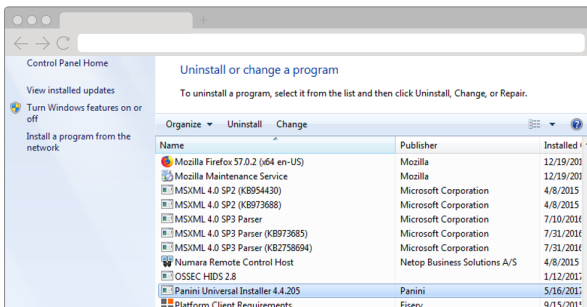
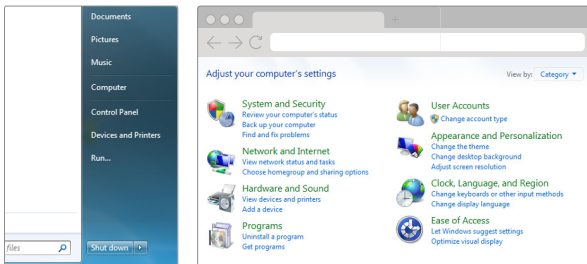


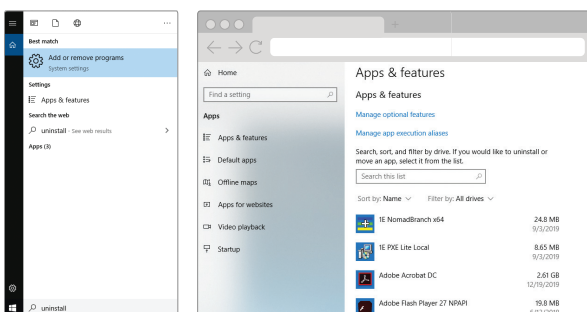
TREASURY MANAGEMENT QUICK REFERENCE GUIDE

UNINSTALL A REMOTE DEPOSIT CAPTURE SCANNER

EARLIER VERSIONS OF WINDOWS



RECENT VERSIONS OF WINDOWS



HOW TO UNINSTALL A REMOTE DEPOSIT CAPTURE SCANNER

EARLIER VERSIONS OF WINDOWS:

1. You must first disconnect the scanner's USB cord from your computer.
2. From your Windows menu at the bottom left of your PC, click **Control Panel**. In the Programs section, click **Uninstall a Program**.
3. From the listing of programs, locate **Panini Universal Installer** or **WebScan**, depending on which scanner you are using. Once located, right-click and select **Uninstall**, then follow the prompts.

RECENT VERSIONS OF WINDOWS:

1. You must first disconnect the scanner's USB cord from your computer.
2. From the Windows taskbar, type "uninstall" in the search box. Select **Add or remove programs**. The Apps & features screen will open.
3. From the listing of programs, locate **Panini Universal Installer** or **WebScan**, depending on which scanner you are using. Once located, right-click and select **Uninstall**, then follow the prompts.

Need personal support? We're here to help.

1-800-551-4471 or treasurymanagement@simmonsbank.com